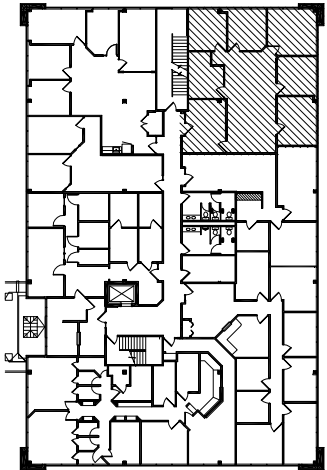
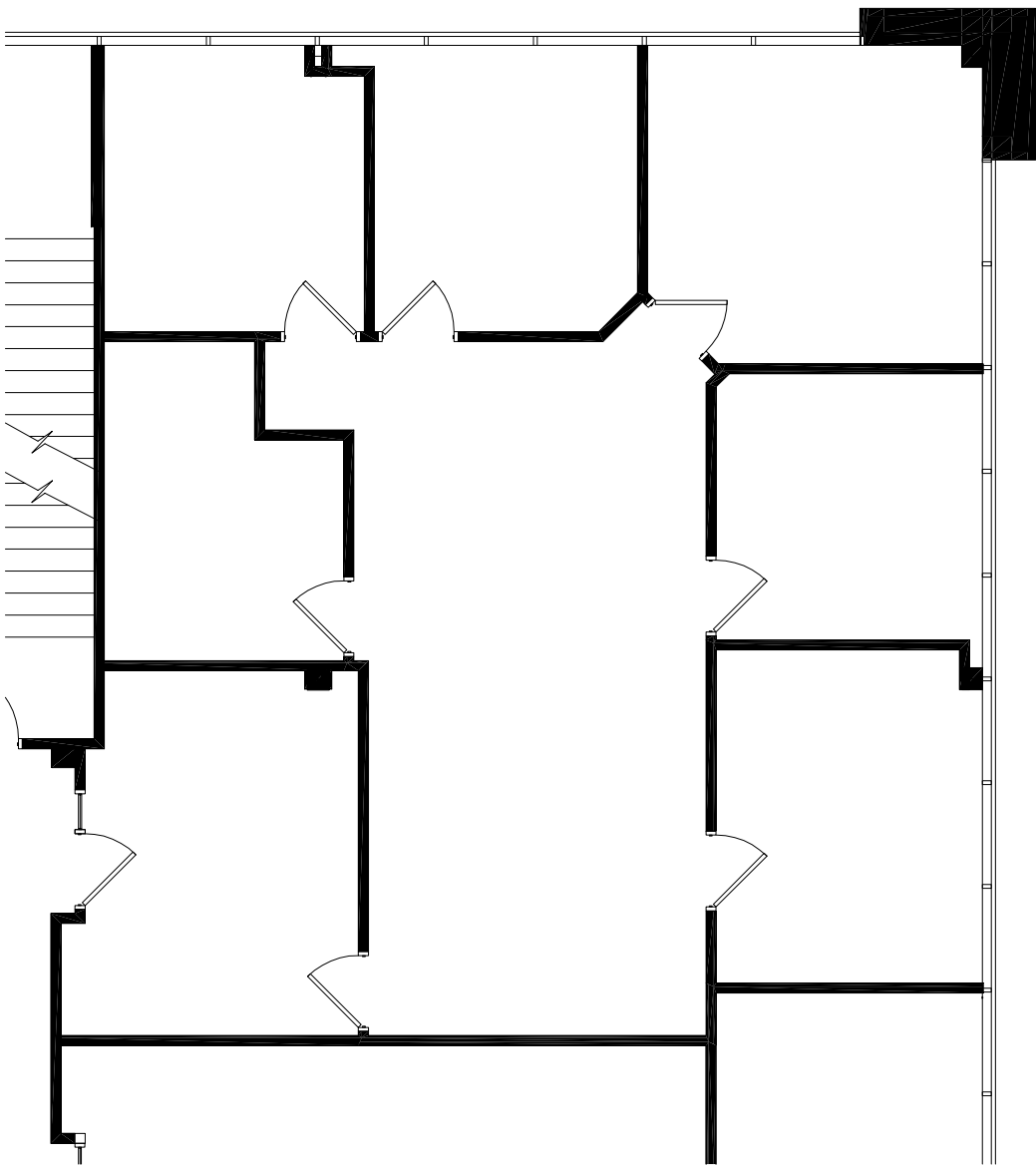




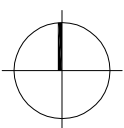
The NELSON Upper Midwest Operating Company, LLC  
PH: 612-822-1211  
Email: cjohnson@nelsononline.com

# 2780 Snelling

Suite 303 - 1,808 RSF



## Key Plan - 3rd Floor



NORTH ARROW

Jeff Houg  
Phone: 763-535-4914

Proj. No.:

2780 Snelling Ave - Roseville, MN

Date Issued: 09/30/09